



LAUREL CREEK HOMES

Mendocino

APPROX. 3606 SQ. FT.
(LIVING AREA)

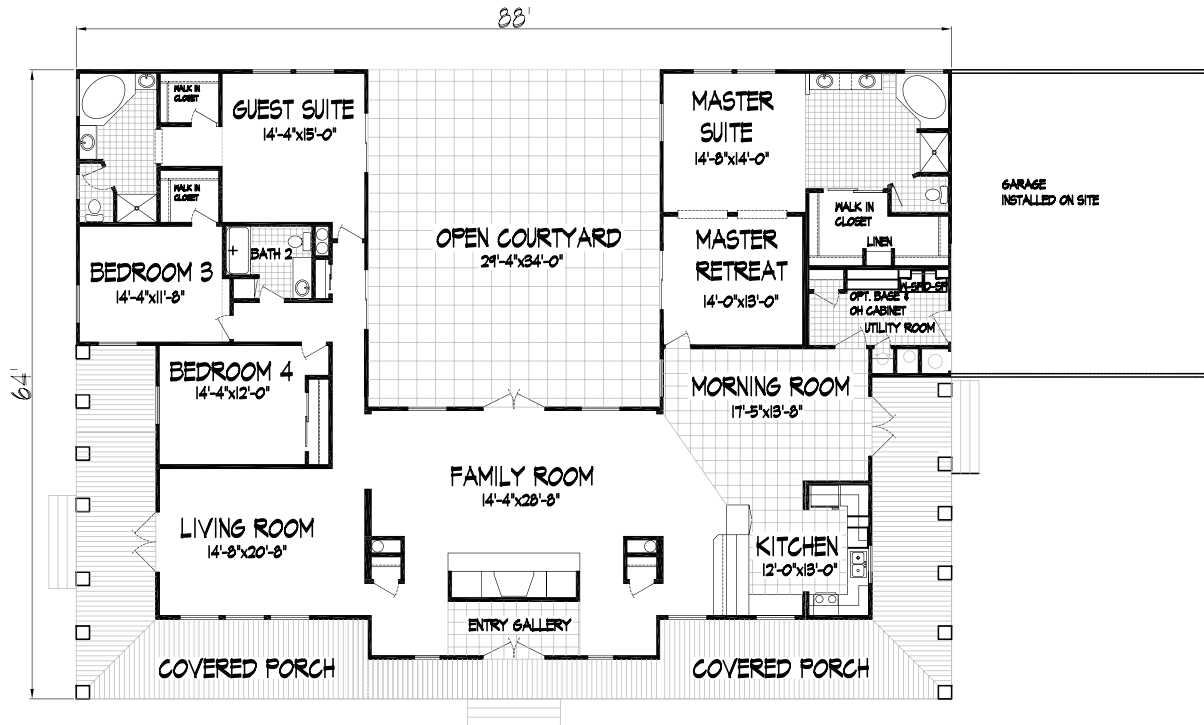
APPROX. 962 SQ. FT.
(PORCH)

APPROX. 4568 SQ. FT.
(TOTAL)

4 BEDROOMS

3 BATHS

GUEST SUITE



Floor plan and rendering shown are for representation purposes and while we consider the information reliable we cannot guarantee its accuracy. Dimensions and square footage shown are approximate. Laurel Creek Homes supplies the homes only, some models are shown with option features and / or third party additions such as garages and porches. Laurel Creek Homes reserves the right to make modifications to floor plans, elevations, and specifications at any time. Check with your Laurel Creek Homes representative for complete details. Revised 2/15/07